

WORKING CONDITIONS SDM100

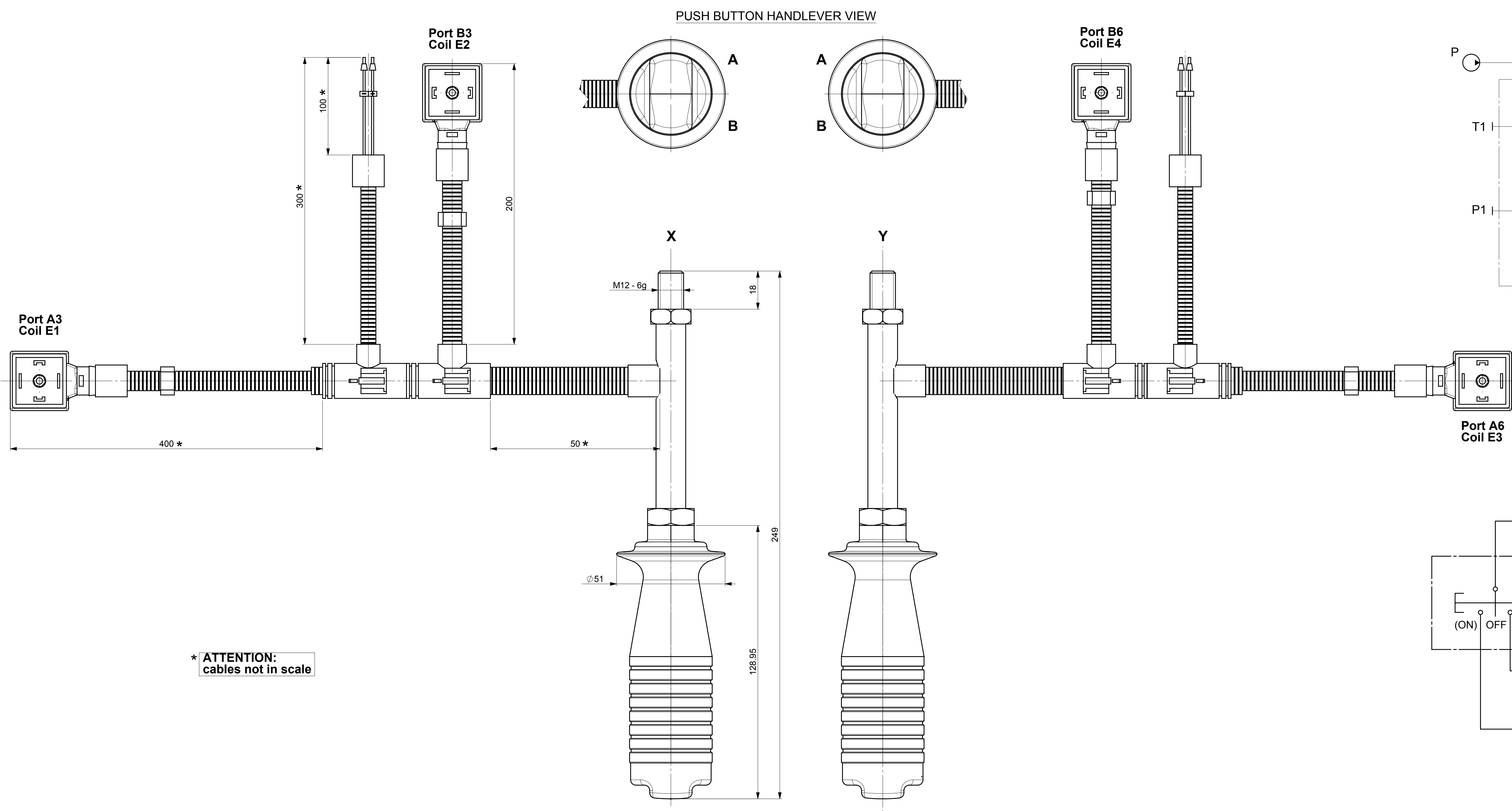
Nominal flow	: 70 l/min
Nominal pressure	: 315 bar
Max. backpressure	: 10 bar
Fluid	: Mineral based oil
Viscosity range	: 12 to 400 mm ² /s
Seal material	: NBR
Temperature range of the fluid	: -20°C to +80°C
Environmental temperature	: -20°C to +50°C
Max. rate of contamination of the fluid	: 19/16 - ISO 4406
Internal leakage	: 5 cm ³ /min at 100 bar 40°C and 46 mm ² /s

ELECTRICAL FEATURES SDM100

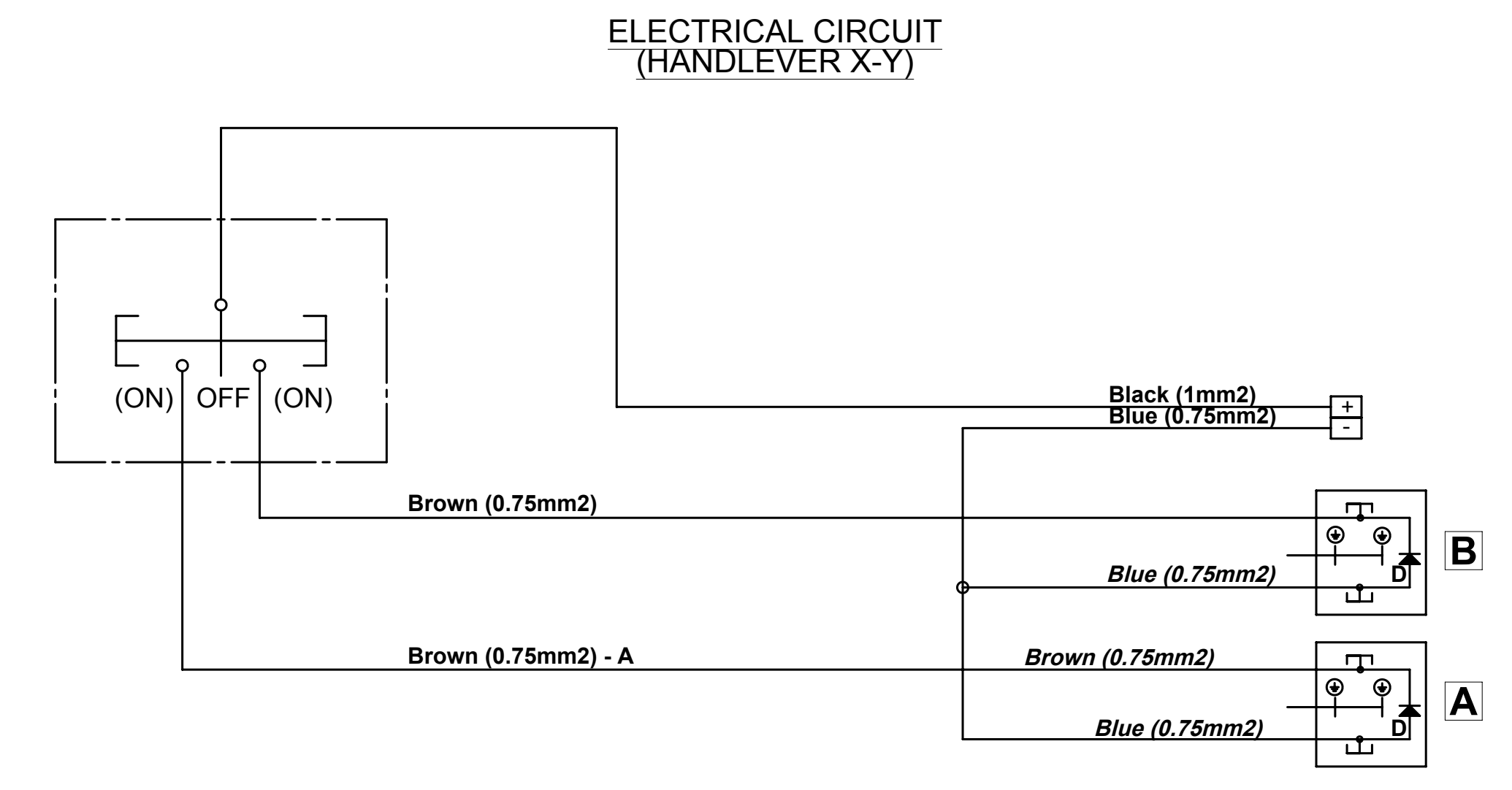
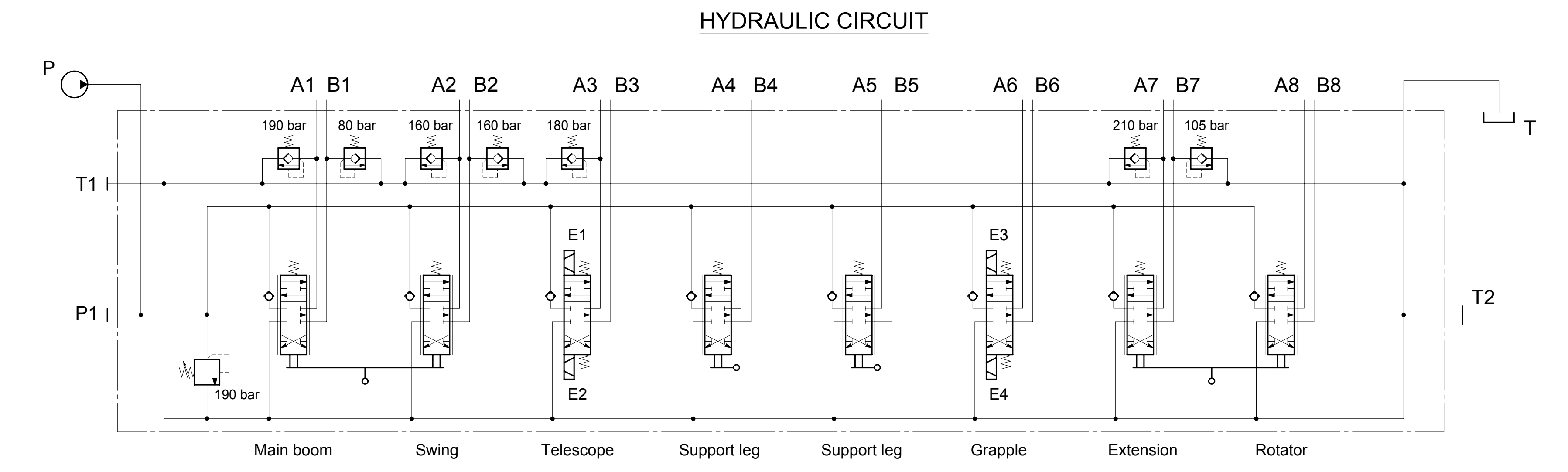
Nominal voltage	: 10.5VDC - 10%
Nominal power	: 36W
Nominal current	: 3.43 A
Electric resistance	: 3.06 Ohm
Duty	: 100%
Coil insulation	: Class H

ELECTRICAL FEATURES HANDLEVERS

CURRENT RATING (28VDC)	: 6A / 30 VDC 4A / 30 VDC
MECHANICAL LIFE (n° of operations)	: 3.000.000
ELECTRICAL LIFE (n° of operations)	: 100.000
SEAL	: IP54



* ATTENTION:
cables not in scale



SDM100/8-P(TGW3-190)/
109-8 U1(190)/2(80)/LCA4/
102-8 U3(160)/
S102-8ES3 U1(80)/
101-8U/
S102-8ES3/
103-8 U1(210)U2(105)/LCA3/
107-8/
AET-BSP12(PABT)-PSA-10.5VDC+ASTA LEVA AL17/
01B1F02040(TC)-02B1F02040(TC)-AU2055(TC)/M12x250

Last revision description :	Scale 1:1	AD-SW
Substitute		
Technical Reference: Cigarini		
Draw: 10/01/12/AttoliniR	Code 501080013	I.R. 01
All rights reserved		